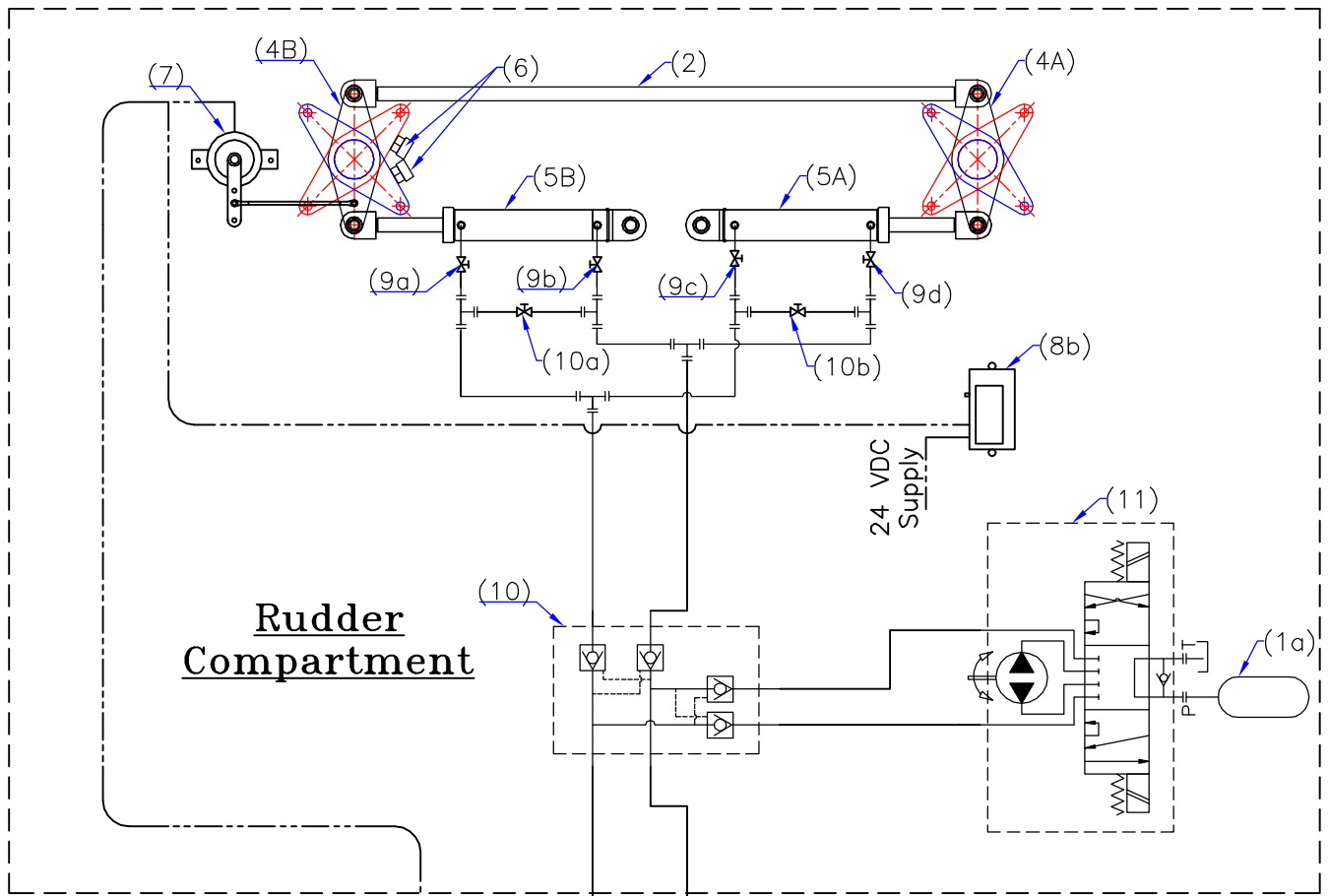


Schematic Diagram of JumboZ-500M



Rudder Compartment

Wheel House

SPECIFICATIONS

1. Tiller Radius : 300mm.
2. Pump Capacity: -
MANUAL : 80CC/rev.
3. HYD. ACTUATOR: -
RAM : 40MMX2
STROKE : 440MM.
4. PIPE :-
OD - 16MM.
ID - 12MM.
5. HOSE :-
GRADE - R1
I.D - 1/2"

11	Emergency Steering - 80cc/rev.
10a,10b	By-Pass Valve
9a,9b,9c, 9d	Isolation Valve
8a,8b	Rudder Angle Indicator
7	Rudder Angle Sensor
6	Mechanical Stopper (Customer Supply)
5a,5b	Hyd. Actuator
4a,4b	Tiller Arm
3.	Main Steering Unit- 80cc/rev.
2.	Connection Rod (Customer Supply)
1a,1b.	Oil Reservoir
Sl.no	Description

Unspecified Machining Deviations			Angular Dimensions		ITEM	SCALE	MATERIAL	VIEW	DRAWN	CHECKED	
Linear Dimensions			Length of Shorter Side of Angle	Deviation in		/	NTS	/	JK	VUK	
ABOVE	UPTO	DEVIATIONS		MM	Degree or minutes						
			Above	Upto							
MAC ♦ N ♦ HOM SYSTEMS KOCHI - 20											
DESIGNATION									DWG NO	DATE	QTY
Schematic Diagram of JumboZ-500M Class Ver.									MHS-1046	08.12.2020	/